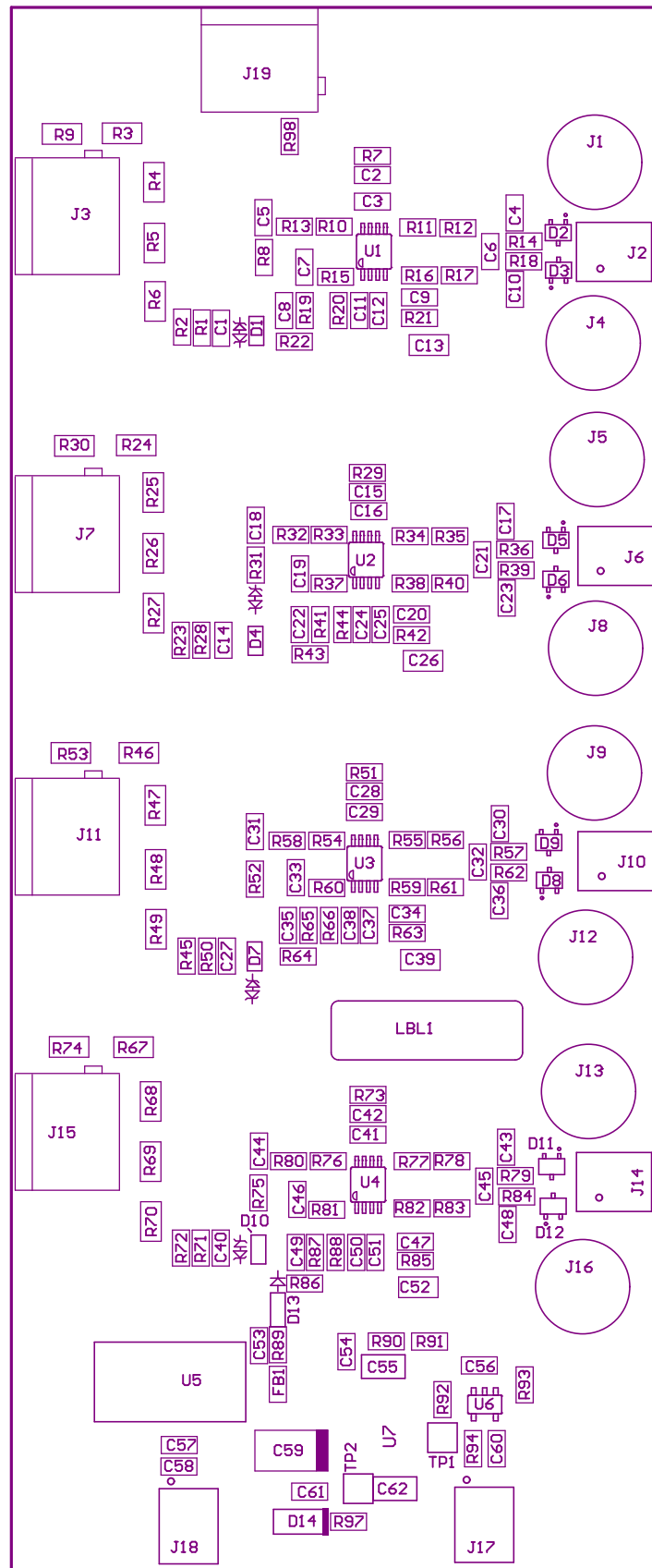


Z21 ■ Install label in silkscreened box after final wash. Text shall be 8 pt font. Text shall be per the Label Table in the PDF schematic.

Z22 ■ These assemblies are ESD sensitive, ESD precautions shall be observed.

Z23 ■ These assemblies must be clean and free from flux and all contaminants. Use of no clean flux is not acceptable.

Z24 ■ These assemblies must comply with workmanship standards IPC-A-610 Class 2, unless otherwise specified.



COMPONENTS MARKED 'DNP' SHOULD NOT BE POPULATED.

ASSEMBLY VARIANT: [No Variations]

PCB VIEWED FROM TOP SIDE	BOARD #:	TIDA-00499_DFR	REV:	E1	SUN REV:	Not In VersionControl
M5 Assembly Top						
PLOT NAME =	Top Assembly Drawing	GENERATED :	9/23/2015	9:54:01 AM	TEXAS INSTRUMENTS	

PLOT NAME = Bottom Assembly Drawing		GENERATED : 9/23/2018 8:24:01 AM		TEXAS INSTRUMENTS
		IGNORE -> M6 Assembly Bottom		
PCB VIEWED FROM BOTTOM SIDE		BOARD #:	REV: E1	SUN REV: Not in VersionControl

ASSEMBLY VARIANT:  
[No Variations]

COMPONENTS MARKED 'DNP' SHOULD NOT BE POPULATED.

